



 **VIGNESH**
POLYMERS | ELECTRIC



R.B SIVAKUMAR

Founder and CEO
VIGNESH POLYMERS INDIA PVT LTD.

With steadfast support and encouragement from our esteemed customers across diverse industries such as home appliances, automotive, telecommunications and electric vehicles, our young organisation has achieved remarkable progress within less than two decades.

To address evolving market demands, foster business growth and excel in a competitive landscape, we maintain an unwavering focus on innovation within our core areas of expertise, consistently delivering superior-quality outcomes to our valued clientele.

The foundation of our success lies in the dedication and exceptional skills of our employees, each of whom contributes their unique strengths to our collective endeavors.

At Vignesh Polymers, we uphold the highest industry standards, ensuring we consistently exceed customer expectations. Ultimately, our guiding principle is simple: Customer satisfaction and quality are our top priorities.

About Us

Vignesh Polymers India Private Limited is one of the fastest-growing integrated manufacturing organisations in south india catering to the white goods and automobile sectors since 2005 and specialising in injection moulding & assembly, painting & rigid packaging, sheet metal stamping & welding with future focus on contract manufacturing with EMS facilities for EV two-wheeler components.



Seven State of the art manufacturing facilities in South & West India



Certified ISO 9001:2015, ISO 14001:2015, ISO 45001:2018, IATF 16949:2016 and Hyundai SQ certification



Leading manufacturer in the automotive and consumer goods industries for two decades



Driven by over 600 qualified professionals



135 moulding machines, including 80T to 2000T injection moulding machines, vertical moulding machines, and blow moulding machines ranging from 60L to 150L



Equipped with 21 EPS shape moulding (120T - 180T) & sheet metal stamping (250T – 350T) machines

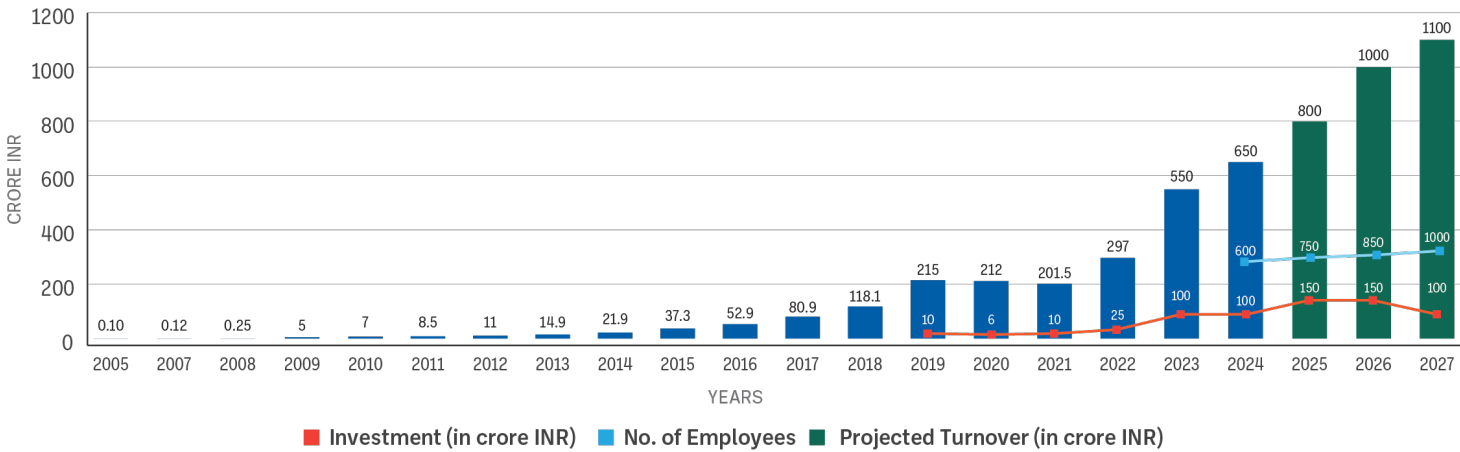
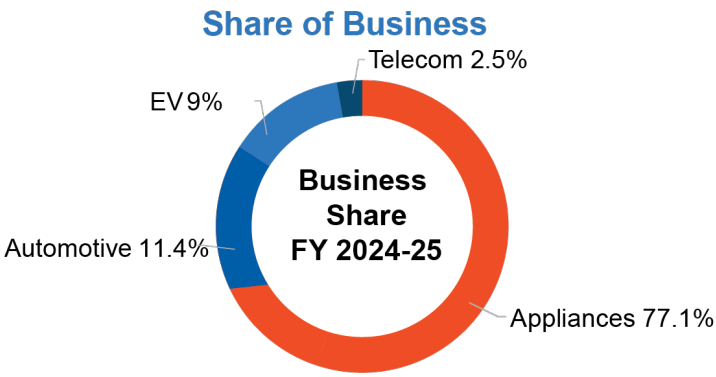
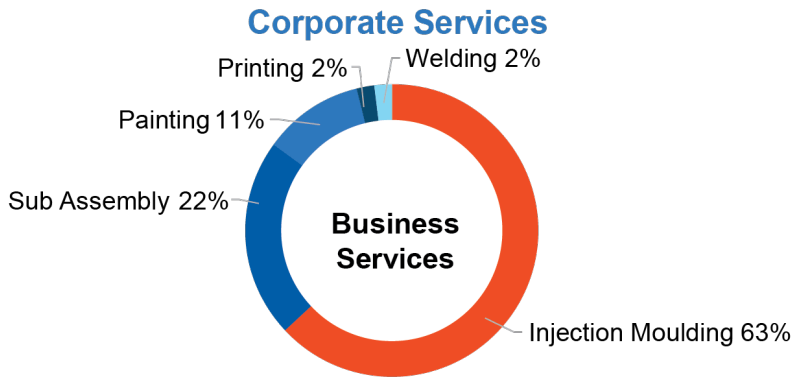


We produce over 460+ components ranging from 0.0015 kg to 7.0 kg

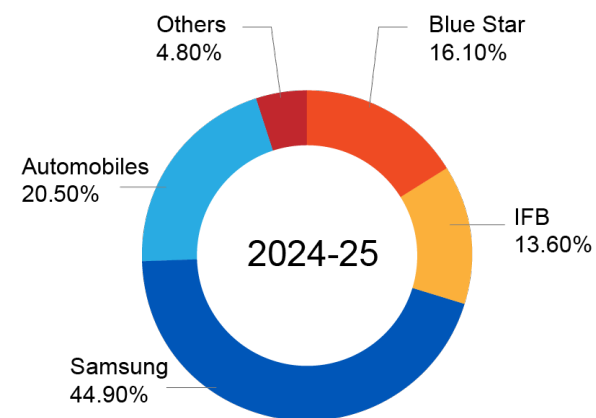
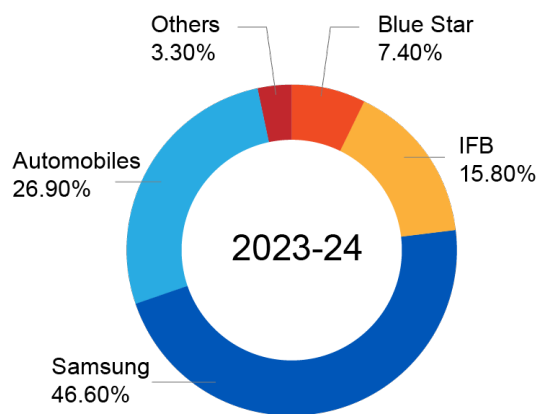
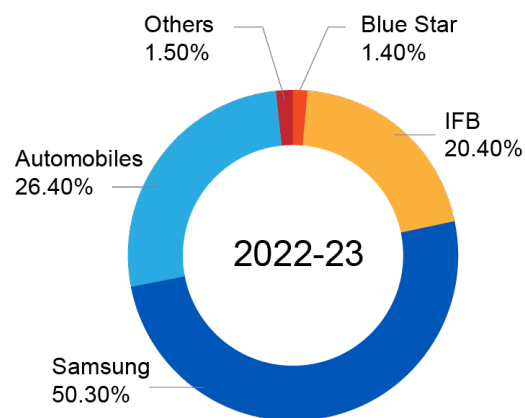


We manufacture BLDC & Fan motors for HVAC, air conditioners, and refrigerators

Business Share



Business Share



■ Blue Star ■ IFB ■ Samsung ■ Automobiles ■ Others

Our Presence

Tamil Nadu



Injection Moulding Plant
(Chennai)



Injection Moulding, Stamping
& Assembly Plant (Chennai)



Injection, Blow Moulding,
Painting & Assembly Plant



EPS Plant (Chennai)



Injection Moulding &
Assembly Plant (Pochampalli)



Manufacturing of Injection
Moulding, Printing &
Assembly (Chennai)



BLDC, CFF, Propeller
Assembly (Chennai)

Goa



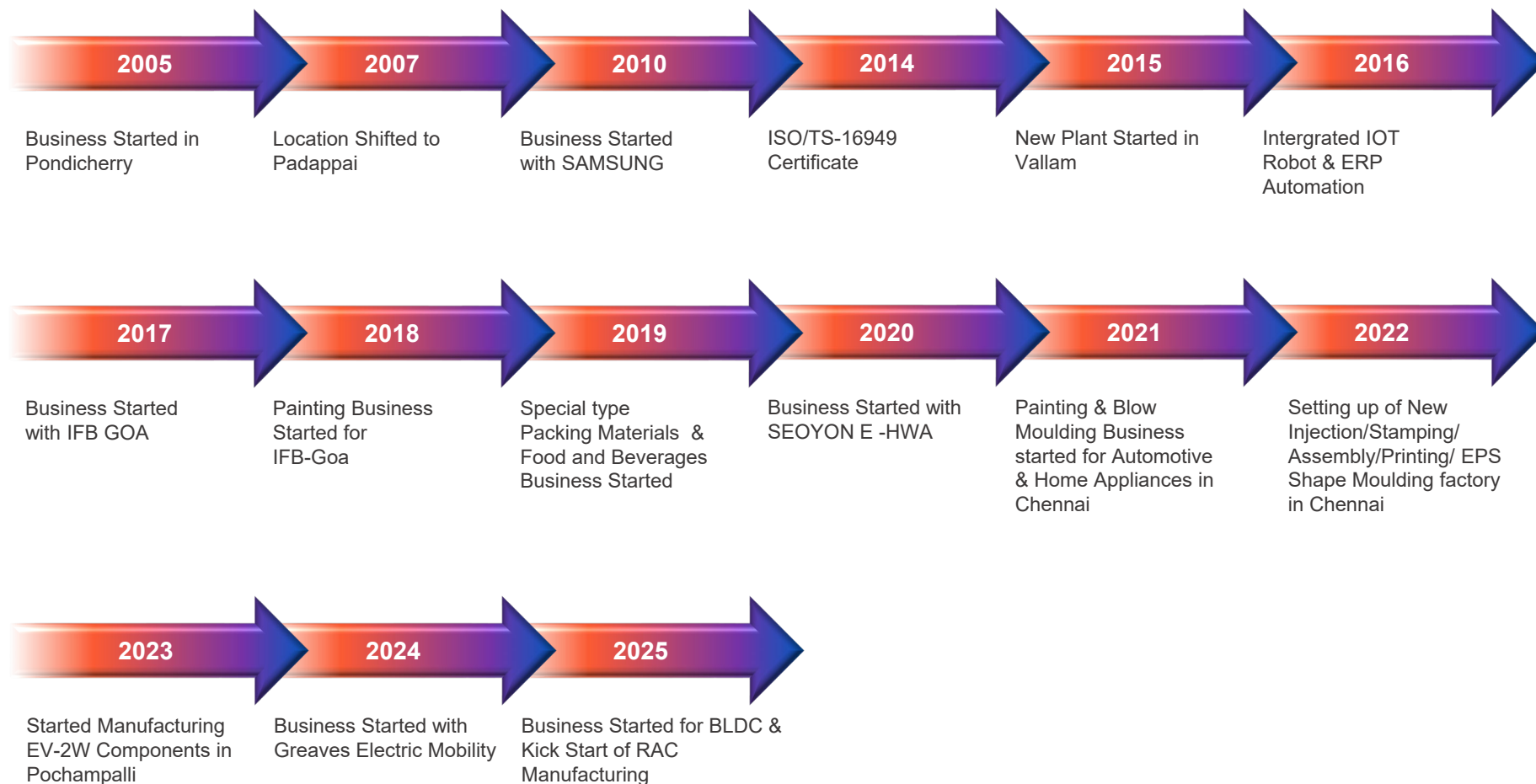
Moulding Plant (Goa)



Paint Shop (Goa)



Company Transformation



Our Facilities



Injection Moulding



Sheet Metal Stamping



EPS Shape Moulding



Blow Moulding



3C Painting



BLDC & Fan Motors



Cassette Kit



IDU Kit



Washing Machine Tub Kit

Our Esteemed Customers

SAMSUNG

IFB

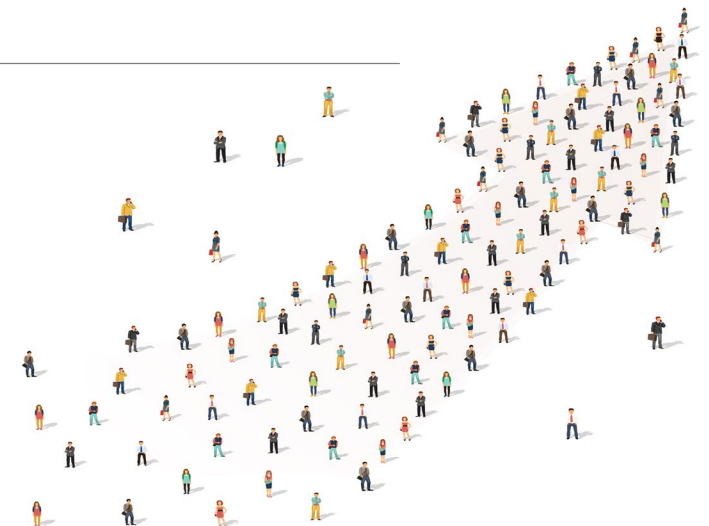


Panasonic

B/S/H/



OLA ELECTRIC



Injection Moulding

We manufacture a diverse range of over 460+ components, spanning from 0.0015 kg to 7.0 kg, using a variety of machinery. Our equipment inventory comprises more than 135 Injection Moulding Machines, with sizes ranging from 80T to 2000T, encompassing both horizontal and vertical Injection Moulding Machines. In addition, we maintain four Blow Moulding Machines, with capacities ranging from 60 liters to 150 liters. We've also established a centralized material conveying system, on-site mold maintenance infrastructure, and other indispensable features. Furthermore, these facilities are highly adaptable and can be automated as needed, and they are operated by a skilled and knowledgeable workforce.



Injection Moulding Machine



Vertical Moulding Machine

Home Appliances - Washing Machine



Assy Cover Top



Cover Top



Assy Outer Tub



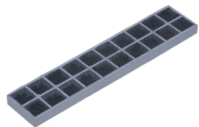
Die motor Plat



Tub Front



Tub back



Filter



Assy Case DV



Insulation



Connector

A washing machine is an essential home appliance that simplifies laundry by automating the cleaning process. It uses water, detergent, and mechanical action to remove dirt from clothes, offering various wash cycles for different fabrics. It saves time and effort.

Moulded Parts

Washing machine molded parts include the drum, door, detergent dispenser, and control panel, providing durability water resistance, and functionality.



Home Appliances - Air Conditioner



Frame



Base18k



Panel Front



Cross Flow Fan

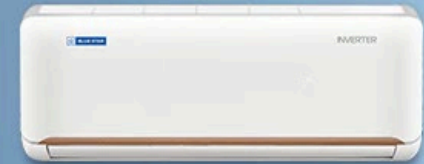


Louver

An air conditioner is a crucial home appliance that cools indoor air, providing comfort during hot weather. It works by circulating refrigerant to absorb heat, improving indoor air quality, reducing humidity, and ensuring a pleasant environment in warm climates.

Moulded Parts

Air conditioner molded parts include housing, compressor cover, control panel, and vents, offering durability, heat resistance, and efficient airflow.



Home Appliances - Air Conditioner



Main Frame



Bezel



Cassette Rear



Cassette Front



Propeller Fan



Display PCB Cover



Filter

An air conditioner is a crucial home appliance that cools indoor air, providing comfort during hot weather. It works by circulating refrigerant to absorb heat, improving indoor air quality, reducing humidity, and ensuring a pleasant environment in warm climates.

Moulded Parts

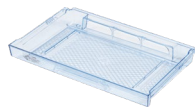
Air conditioner molded parts include housing, compressor cover, control panel, and vents, offering durability, heat resistance, and efficient airflow.



Home Appliances - Refrigerator



Tray Chilled Room



Guard Variety



Guard Egg



Guard Fresh Max



Case Veg Low



Guard Fre Up



Rail Shelf



Cover Decolorizer



Cover Evap

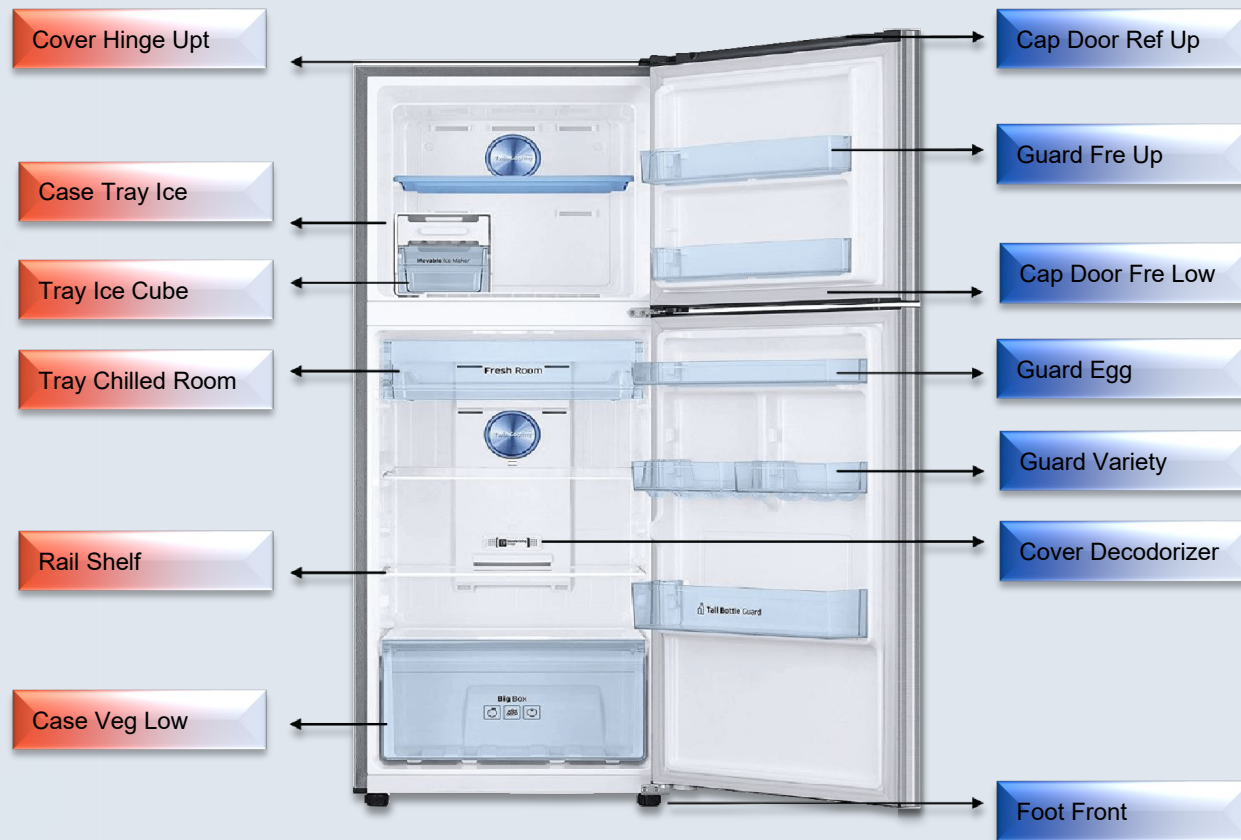
A refrigerator is a vital home appliance that keeps food fresh by maintaining a cool temperature. It slows down bacterial growth, preventing spoilage of perishable items like fruits, vegetables, dairy, and meats. Modern fridges offer energy efficiency and advanced storage features.

Moulded Parts

Refrigerator molded parts include door liners, shelves, ice trays, and seals, providing durability, insulation, and efficient functionality for the appliance.



Home Appliances - Refrigerator



Manufactured Components - EV 2-Wheeler



Instrument Cluster
Cover FR



Front Panel Top



Rear Panel Top



Front Fender



Side Panel RH



Protection
Board LH

Manufactured components in electric two-wheelers (EVs) include the motor, battery pack, controller, frame, wheels, and suspension. These parts are engineered for efficiency, performance, and durability, ensuring smooth rides, optimal energy use, and low environmental impact in electric mobility.

Moulded Parts

Molded parts in electric two-wheelers include battery housings, motor covers, control panels, and body panels, offering durability and lightweight design.



Manufactured Components - 4-Wheeler



Panel Front DR
Main Trim LH



Radiator Grill



Garnish Gender
Side LH RH



BA Filter



IB Filter



Lens LH RH

Manufactured components in electric four-wheelers include the battery pack, electric motor, drivetrain, chassis, wheels, suspension, and control systems. These parts are designed for high efficiency, performance, safety, and long-term durability in electric vehicle operation.

Moulded Parts

Molded parts in electric four-wheelers include dashboard panels, bumpers, door trims, wheel covers, and battery enclosures, ensuring durability and lightweight performance.



Blow Moulding

At Vignesh Polymers, we take immense pride in our Blow Moulding expertise. Our Blow Moulding process is a culmination of advanced technology, precision engineering, and a relentless pursuit of excellence. We specialize in creating a diverse array of plastic products through this technique, catering to various industries and applications. Whether it's producing innovative packaging solutions, industrial components, or customized designs, our commitment to quality and sustainability remains unwavering. With a dedicated team and state-of-the-art facilities, Vignesh Polymers is your trusted partner in the World of Blow Moulding, providing top-tier solutions tailored to your specific needs.



EPS Moulding

Vignesh Polymers is a leader in the field of EPS (Expanded Polystyrene) Moulding, where innovation and sustainability harmoniously coexist. Our EPS Moulding process is a testament to our dedication to delivering environmentally friendly and versatile solutions. With cutting-edge technology and a team of skilled professionals, we shape EPS into a wide range of products, from insulation materials to packaging solutions, all designed with the environment in mind. Our commitment to quality and eco-conscious manufacturing shines through in every product we create. Discover the world of EPS Moulding with Vignesh Polymers, and let us contribute to a greener and more sustainable future.



Silo

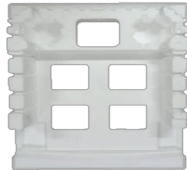


Air Conditioner | Washing Machine |
Visual Display

EPS Parts and Packaging



Cushion Top



Cushion Bottom



Cushion Corner Front



Insulation Key



Cushion Corner Rear



Cushion Top

Refrigerator EPS parts and packaging include expanded polystyrene foam used for insulation and protection.

EPS helps maintain temperature, prevents damage during transport, and ensures energy efficiency, enhancing overall appliance performance and safety.



EPS Parts and Packaging



Cushion Front



Cushion Bottom

Washing machine EPS parts typically include foam inserts for packaging, shock absorbers, and insulation layers. These parts protect the appliance during transport, reduce vibrations, and help maintain stability and energy efficiency.



EPS Parts and Packaging



Cushion left



Cushion Right



Seal Cushion Body

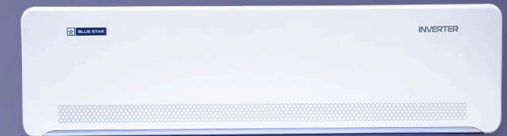


Cushion Left



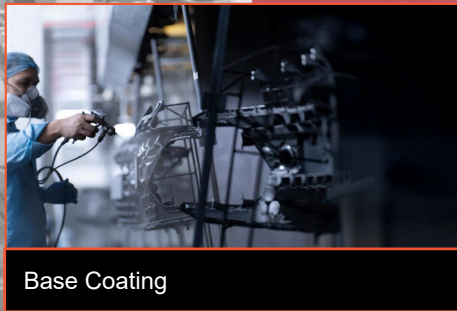
Cushion Right

Air conditioner EPS parts include foam inserts for packaging, insulation panels, and protective layers. These components help safeguard the unit during transportation, reduce vibrations, and enhance energy efficiency by providing thermal insulation.



Component Painting

Vignesh Polymers takes immense pride in providing top-notch painting solutions to leading automobile and appliances companies. Our expertise in painting applications is driven by a commitment to quality and precision. We offer a wide range of coating options, from automotive finishes that ensure vehicles look their best to protective coatings for appliances that enhance their durability and aesthetics. With advanced technology and a team of skilled professionals, we deliver coatings that not only meet but exceed the demanding standards of the automobile and appliance industries. Whether it's enhancing the appearance of a car or ensuring the longevity of household appliances, Vignesh Polymers is the trusted choice for premium painting solutions.



Component Painting 2-Wheeler



Instrument
Cluster Front



Front Fender



Front Fender



Side Skirt LH &
RH



Front Panel



Side Panel

2-Wheeler painting components include body panels, frames, wheels, engines, exhaust systems, handlebars, mirrors, bumpers, and light housings. Materials vary from metal, plastic, and fiberglass, with paints ensuring durability, aesthetics, corrosion resistance, and heat protection.



Component Painting 4-Wheeler



QXI Spoiler - X5B



PS7I Spoiler - X5B



PS7I Spoiler - PWT



BI3 Spoiler - X5B



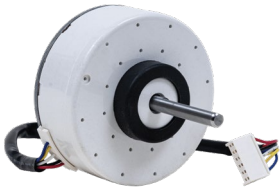
Spoiler Lower - SU2I

4-Wheeler painting components include body panels, frames, wheels, engines, exhaust systems, handlebars, mirrors, bumpers, and light housings. Materials vary from metal, plastic, and fiberglass, with paints ensuring durability, aesthetics, corrosion resistance, and heat protection.



BLDC & Fan Motors

We manufacture special application motors and fans in HVAC systems, focusing BLDC & Fan motors for air conditioners and refrigerators.



IDU-Motor



ODU-Motor



Fan-Motor

Electric Parts



Motor Drain



Assy Wire Harness



Sensor Temp



Cover Hinge



Cover Hinge



Clutch



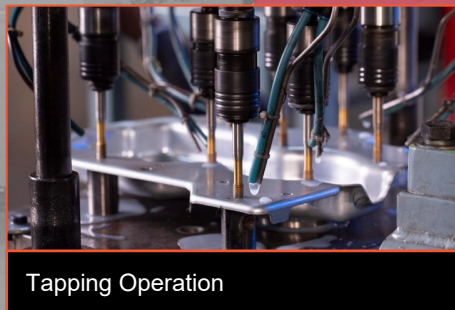
Clutches

Washing machines and air conditioners depend on essential electric components for optimal performance. Washing machines feature motors, control boards, thermostats, and power supply elements that manage cycles and drum movement. Air conditioners include compressor motors, fan motors, thermostats, and control boards to regulate temperature, circulate air, and ensure energy efficiency.



Sheet Metal Stamping

At Vignesh Polymers, our sheet metal stamping operation stands as a pinnacle of precision and efficiency. With meticulous attention to detail, we ensure that each product is crafted to exact specifications, meeting the highest standards of quality and performance. Incorporating tapping and trimming operations further enhances the integrity of our components, guaranteeing seamless integration and functionality. Our dedication to excellence in press molding, tapping, and trimming operations is a testament to our commitment to delivering superior solutions to our valued customers.



Post Moulding Activities

At Vignesh Polymers, our commitment to excellence doesn't stop at moulding. We offer a diverse range of post-moulding activities to provide comprehensive solutions to our clients. Our services include Pad Printing and Screen Printing, which add intricate designs and branding to your products with precision. Ultrasonic Welding and Hot Plate Welding ensure strong and seamless connections for various components, while Friction Welding brings unmatched efficiency to the assembly process. We also specialize in Painting, where we apply vibrant coatings to enhance aesthetics and durability. These post-moulding activities represent our dedication to delivering complete and customized solutions, making Vignesh Polymers your one-stop destination for all your polymer manufacturing needs.



Logo Assembly



Cassette Assembly

THANK YOU

www.vigneshpolymers.com